



WONDERGREECE

Discovering the Athenian Riviera

Plan Days 3

We enjoy the coast of Attica with its rich nature beauty and the intense cultural elements! The exploration begins!

By: Christina Koraki




Day 1

1. Athens International Airport
"Eleftherios Venizelos" 
About region/Access & Useful info
2. Stefano's Villa
Accommodation
3. Mavro Lithari of Saronida
Nature/Beaches
4. Temple of Poseidon in Sounio
Culture/Archaeological sites
5. Stefano's Villa
Accommodation

Day 2

1. Stefano's Villa 
Accommodation
2. Acropolis
Culture/Archaeological sites
3. Plaka & Anafiotika
Culture/Monuments & sights
4. Acropolis Museum
Culture/Museums
5. Odeon of Herodes Atticus
Culture/Monuments & sights
6. Filopappou Hill
Culture/Monuments & sights
7. Vouliagmeni Beach
Nature/Beaches
8. Stefano's Villa
Accommodation

Day 3

1. Stefano's Villa 
Accommodation
2. Lake Vouliagmeni
Nature/Lakes
3. Grand Beach
Nature/Beaches
4. Stefano's Villa
Accommodation



1. Athens International Airport "Eleftherios Venizelos"

About region / Access & Useful info



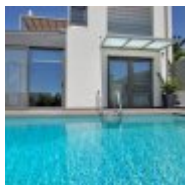
Απόσταση:

Start -

Χρόνος:

-

GPS: N37.9363244,
W23.947402199999942



2. Stefano's Villa

Accommodation



Απόσταση:

by car 21.1km

Χρόνος:

23'

GPS: N37.79864811913708,
W23.8770784509735



3. Mavro Lithari of Saronida

Nature / Beaches



Απόσταση:

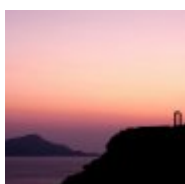
by car 23.1km

Χρόνος:

26'

GPS: N37.735704310963854,
W23.904924431352242

Note: First swim! A few minutes from the airport and rejuvenation began!



4. Temple of Poseidon in Sounio

Culture / Archaeological sites



Contact:

T: (+30) 22920 39363

Απόσταση:

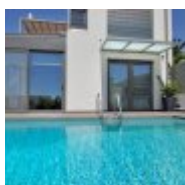
by car 8.5km

Χρόνος:

11'

Note: One of the most impressive temples overlooking the Aegean and the mountains of the Peloponnese! The sunset from the temple has inspired quite a few!

GPS: N37.65027301202047,
W24.02459982670598



5. Stefano's Villa

Accommodation



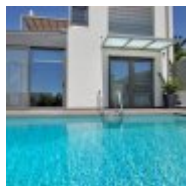
Απόσταση:

by car 31.2km

Χρόνος:

38'

GPS: N37.79864811913708,
W23.8770784509735



1. Stefano's Villa

Accommodation

**Απόσταση:**

Start -

Χρόνος:

-

GPS: N37.79864811913708,
W23.8770784509735

Note: A morning swim in the pool! Fill coolness and begin for the historical center of Athens!



2. Acropolis

Culture / Archaeological sites

**Contact:**

T: (+30) 210 3214172,
3236665

Απόσταση:

by car 54.8km

Χρόνος:

51'

GPS: N37.97140447116774,
W23.726399011114495



3. Plaka & Anafiotika

Culture / Monuments & sights

**Απόσταση:**

on foot 0.5km

Χρόνος:

06'

GPS: N37.973169675123785,
W23.727746963476534



4. Acropolis Museum

Culture / Museums



Location:
Athens

Απόσταση:

on foot 0.5km

Χρόνος:

07'

GPS: N37.969204597024195,
W23.729069399475065



5. Odeon of Herodes Atticus

Culture / Monuments & sights

**Απόσταση:**

by car 0.7km

Χρόνος:

07'

GPS: N37.97074137343488,
W23.72448492327885



6. Filorappou Hill

Culture / Monuments & sights



Απόσταση:

[on foot](#) 0.6km

Χρόνος:

07'

GPS: N37.969566699395266,
W23.719663093640065



7. Vouliagmeni Beach

Nature / Beaches



Απόσταση:

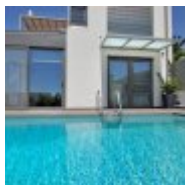
[by car](#) 24.4km

Χρόνος:

30'

GPS: N37.813049293235906,
W23.77806757249141

Note: What nicer after this strong dose of culture, a swim in the clear blue waters of Vouliagmeni! Afternoon swim with the colors of the sunset!



8. Stefano's Villa

Accommodation



Απόσταση:

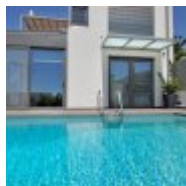
[by car](#) 13.7km

Χρόνος:

20'

GPS: N37.79864811913708,
W23.8770784509735

Note: Relaxation and time to observe the stars!

**1. Stefano's Villa**

Accommodation

**Απόσταση:**

Start -

Χρόνος:

-

GPS: N37.79864811913708,
W23.8770784509735**2. Lake Vouliagmeni**

Nature / Lakes

**Απόσταση:**

by car 14.8km

Χρόνος:

20'

GPS: N37.807742804137085,
W23.785562016146855**3. Grand Beach**

Nature / Beaches

**Απόσταση:**

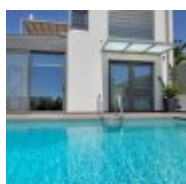
by car 17.0km

Χρόνος:

19'

GPS: N37.7793845038021,
W23.891691125686634

Note: Enjoy the crystal clear beach and all the amenities that offers with the free passes that we offer you!

**4. Stefano's Villa**

Accommodation

**Απόσταση:**

by car 2.9km

Χρόνος:

05'

GPS: N37.79864811913708,
W23.8770784509735

Attiki Prefecture

Access

By bus

Bus station Kifissos (KTEL): This is the central bus station connecting Athens with most cities of Greece. It is located at 100 Kifissou Avenue Str. and it can be accessed by the bus lines X93 from "Eleftherios Venizelos" airport, 051 from Omonia and 420 from Piraeus.

Tel.: (+30) 210 5124910-11, 5132601

Bus station Liosion (KTEL): The station is located at 26 Stratigou Dagkli Str. and there are several itineraries to neighboring prefectures of Attica. It can be easily accessed since there is a large number of bus lines passing by the station, such as X93, 420, 701, 704, A10, B10 et al.

Tel.: (+30) 210 8317186

You can call 14505, where recorded information for all the bus stations (KTEL) and the itineraries are provided.

By train

TRAI NOSE and OSE: TRAI NOSE is the suburban railway company and OSE is the traditional railway company. There are itineraries that connect Attica with central and smaller cities.

Tel.: 14511 (recorded messages)

www.trainose.gr and www.ose.gr

By boat: The prefecture of Athens has three ports to service the passengers' wants. The largest one, the port of Piraeus, is located closer to Athens and thence depart most of the ships. Then follow the ports of Rafina (40km from Athens) and Lavrio (60km from Athens), which have less traffic and itineraries only to certain islands of the Aegean Sea.

Port of Piraeus: It can be easily accessed due to its close distance from Athens. Moreover, the easiest way to get there is by electric-powered train, whose terminal station is located across the port. The passengers can also take the Suburban Railway, whose terminal station is a few meters away from the station of the electric powered train. Moreover, a large number of buses connect the port with several areas of Athens and the suburbs, while it is connected with the airport via the bus line X96.

Tel.: 14541 (for itineraries, changes or delay information)

www.olp.gr

Port of Rafina: To the east of the prefecture of Attica, on the coast Andreas Papandreou is located the port of Rafina. The port can be accessed either by private means or by the itineraries of the bus station (KTEL) of Attica, from where ships depart for Andros, Syros, Tinos, and Mykonos.

Tel.: (+30) 22940 23605, 22840

www.rafinaport.gr

Port of Lavrio: Nearly at the southeast part of Attica, shortly after Sounio, lies the port of Lavrio. It can be accessed either by car or by taxi or by bus (bus station (KTEL) Attica). The port of Lavrio is 60km from Athens and 25km from "El. Venizelos" airport. Moreover, this port has several itineraries to Kea, Lesvos, Limnos, Chios and some other islands of the Aegean Sea.

Tel.: (+30) 22920 27711, 22089

www.oll.gr

By plane: "Eleftherios Venizelos", the national airport of Athens, is located in Spata and is one of the most modern airports. It can be accessed by the following public means of transport: the Suburban Railway, the Metro (blue line), and the bus lines X95 from Syntagma Square, X96 from Piraeus, X93 from the bus station Kifissos and X97 from the metro station Dafni.

Tel.: (+30) 210 3530000

www.aia.gr

Domestic transportation

Means of transport in Athens and Piraeus: The public transport in Athens and Piraeus accommodates almost every corner of the city. In particular, there are:

- The buses (ETHEL) and the trolley buses
- The Attic Metro, which is the fastest mean of transport in Athens
- The Electric-powered Railway, which connects the northern suburbs with the port of Piraeus and is also connected with the two Metro lines.
- Moreover, there are two tram lines that connect Piraeus with the center of Athens and the southern coastline from Piraeus till Voula.
- For itineraries information, you can contact the Urban Transport Organization of Attica in the telephone numbers 185 and (+30) 210 8200999
www.oasa.gr

Bus station Attica (KTEL): The destinations within the prefecture are accommodated by the point of departure in Athens and specifically at Mavromateon in Pedion of Areos (railway station "Victoria") and at the Agion Asomaton Square in Thissio (railway station "Thissio").

Tel.: (+30) 210 8808080

You can also call 14505, where recorded information are provided for all the bus stations (KTEL) and the itineraries.

Marinas: If you are traveling by private boat in Attica you will find several marinas

Marina of Flisvos: Trokantero area T: (+30) 210 9871000-2

Marina Zeas: Piraeus (+30) 210 4559000

Marina Vouliagmeni: 77 Apollonos Str., T: (+30) 210 8960012-5

Marina Alimos: Kalamaki area, T: (+30) 210 9880000

Marina Glyfada: 2 Saki Karagiorga, Glyfada T: (+30) 213 2025366, 2025200

Marina Olympic: 77th km Athens-Sounion, Lavrio T: (+30) 22920 63700

Useful telephone numbers

Health Services

The number you can call to learn on duty hospitals is the 166 and the 106, which you can also call in an emergency.

Emergency call: 166

Poisons Centre: (+30) 210 7793777

On duty hospitals/pharmacies/doctors: 14944

Municipalities

Municipality of Athens: 63 Athinas Str., Kotzia Square

T: (+30) 213 2082200, 5277000, 33108261

www.cityofathens.gr

Municipality of Piraeus: Korai Square & 1 Dragatsi Str., Piraeus

T: (+30) 213 2022000, 4127941, 4194000

Police Authorities

Emergency call: 100

Tourist police: 171, (+30) 210 6977386

All police services: 1033

Traffic police: (+30) 210 5230111

Road service: 10400

Port Authorities

Port authority of Piraeus: Coast Miaouli 50, Piraeus: (+30) 210 4147800, 4226000

Port authority of Rafina: Coast Andrea Papandreou 1, Rafina: (+30) 22940 22300, 28888

Port authority of Lavrio: (+30) 22920 25249, 26859

Emergency call: 108

Fire Service, Forestry

Emergency call: 199

Forestry: (+30) 210 60173290, 6395280

Transportations

Urban buses: 185 www.oasa.gr

Attiko Metro: (+30) 210 5194001, www.ametro.gr

Suburban Railway: (+30) 210 5272000, www.proastiakos.gr

Tram: (+30) 210 9978000, www.tramsa.gr

Electric Railway: (+30) 210 3248311, 1440, www.isap.gr

Hellenic Railways Organization: (+30) 210 5297777, www.ose.gr

Suburban Buses: (+30) 1440210, 5124910, www.ktel.org

Athens Sightseeing Public Bus N.400: 185

Taxi

Kosmos: 18300, (+30) 210 5200020

Hellas: 801 1157000, (+30) 210 6457000

Enotita: 801 1151000, (+30) 210 6459000

Hermes: (+30) 210 4115200

Ikaros: (+30) 210 5152800

Europi: (+30) 210 5023783

Express: (+30) 210 9943000

Athina 1: (+30) 1203, 210 9212800

Apollon: (+30) 210 3636508

Asteras: (+30) 210 6144000

Protoporia: (+30) 210 2130400

Glyfada: (+30) 210 9605600